

## **EXPLODED VIEW DIAGRAMS**

This chapter illustrates the physical construction of the NORM system and provides part number and part description information.

Error! No text of specified style in document.

---



*NOTES:*



Item	Description	Part No.
97	PIVOT SHAFT, BACK FRAME	7700M436
98	BACK COVER	7700M440
99	PAN L SCREW, 1/4-20X2 3/4"	HM621832
100	COVER, BACK LOCKING MECHANISM	7700C575
101	WIPER, SEAT BACK HANDLE	7700M562
102	WIPER, FRAME	7700M561
103	ACORN NUT, 6-32	HN534700
104	PLASTIC CHRISTMAS TREE	PP260000
105	SCREW, PAN-L, 8-32 X 3/4, BLACK	HM541815-2
106	HANDLE, REVOLVING HANDLE /WHEEL	BH080002-1
107	WASHER, SHIM	HS381500
108	HEX LOCKNUT, 1/2-20	HN795200
109	RT CLAMP LEVER WELDMENT, SEAT BACK	7700C596
110	CLAMP BRACKET, SEAT BACK	7700C570
111	BEARING PLATE, SEAT BACK	7700C565
112	SUPPORT PLATE, SEAT BACK RACK	7700C584
113	SUPPORT BLOCK, SEAT BACK RACK	7700C583
114	UPPER RACK WELDMENT	7700C580
115	PUSH PLATE, SEAT BACK RACK	7700C577
116	SCREW, FLAT HEAD SOCKET CAP	HC580914
117	SCREW, 1/4-20 X 1-1/4" FLAT HEAD SOCKET	HM620920
118	SHIM, RACK, SEAT BACK	7700M568
119	LOWER RACK, SEAT BACK	7700C576
120	SPRING PLUNGER, BACK LOCKING	7700M585
121	GUIDE BLOCK, RACK	7700M567
122	SCREW, 1/4-20 X 3-1/4 HEX HEAD CAP	HC621236
123	ANTI-FRICTION PLATE, SEAT BACK	7700M598
124	SCREW, SHOULDER, 3/8" D X 1-1	HD343322
125	RACK UNIVERSAL COUPLING WELDMENT	7700C590
126	BUSHING, 1" ID X 1-3/8" OD X 3/4" LG	FB050202
127	CLAMP ROLLER, SEAT BACK	7700M566
128	LEFT CLAMP LEVER WELDMENT, SEAT BACK	7700C597
129	POINTER SCALE, RIGHT	7700CM541
130	BALL STUD	HP706612
131	POINTER SCALE, LEFT	7700CM540
132	GAS SPRING	EZ000771
133	RETAINING CLIP	BB030022
134	BEARING, FLANGED	FB050038
135	LABEL, SEAT TRANSLATION SCALE, RH	7700CM761
136	MAIN LINK, BACK PAN	7700C491
137	HEX CAP NUT, 5/16-18	HN664700
138	SCREW, SHOULDER, 1/2 DIA. x 1-1/2", 3/8-16	HD703322
139	HEX NUT, 3/8-16	HN704000
140	SCREW, BUTTON HD CAP, 3/8-16 x 1", BLACK	HC700417-1
141	SPACER, SEAT HARNESS	7700M528
142	LAP BELT SHOULDER HARNESS	7700S528
143	HEADREST CUSHION	7700S451-XX
144	POINTER SPACER	HP007110
145	POINTER	2900C176
146	SCREW	HC543417
147	LINK, BACK PAN SWING	7700C497
148	SCREW, HEX HD, 1/4-20 x 1-3/4"	HC621224
149	SCREW, SHOULDER, 3/8" X 1-1/4" LG, 5/16-18	HD343320
150	SEAT CUSHION	7700S450-XX
151	LINK, SCREW JACK SWING	7700C495
152	SCREW, SOCKET SET, 1/4-20 x 1/4"	HC701216
153	LOCKWASHER, SPLIT, 3/8"	HS348300
154	DOWEL PIN, 3/8" DIA. x 5/8"	HP346614
155	ANTI-FRICTION LABEL, ACME NUT	7700M498
156	NUT, THREADED, ACME, 3/4-6	7700M494
157	ACME SCREW, 3/4-6	7700M496
158	KEY, 1/8" x 1/8" x 1-1/4"	BK030020
159	ROLL PIN, 1/8" DIA. x 5/8"	HP266723
160	PIVOT ROD	7700M461
161	SEAT PAN FRAME WELDMENT	7700C405
162	SCREW, 1/4-20 X 2-1/4" HEX HEAD CAP	HC621228
163	SPRING, CUSTOM LEFT HAND COIL	BS070727
164	7 DEGREE STOP	7700C465
165	SPRING, CUSTOM RIGHT HAND COIL	BS070728
166	KNOB, LOCKING, 3/8-24 x 3/4"	PP460008
167	LABEL, RECEIVING TUBE #3	181CM303
168	KNOB, PULL	PP450201
169	LABEL, RECEIVING TUBE #2	181CM302
170	SPRING	BS070007
171	PULL PIN	2450M052
172	LABEL, RECEIVING TUBE #1	181CM301
173	V-PUSHER	AA033904
174	SCREW, SOCKET HD CAP, NYLOK, 6-32 x 3/8"	HC533410
175	SCREW, SHOULDER, 1/2" DIA. x 1/2" LG, 3/8-16	HD383312
176	BELT LOOP WELDMENT, MIDDLE	7700C485
177	HEX HD CAP SCREW, 1/2-13 x 1-3/4"	HC781226-1
178	LOCKWASHER, 1/4"	HS308300
179	SCREW CAP, BLACK	PP080005
180	SCREW CAP, WASHER 1/2"	HS010001
181	FLATWASHER 1/4" FLAT	HS307600
182	ELASTIC LOCKNUT, 5/16-18	HN665201
183	THRUST WASHER, .51" ID x .937" OD x .09" THK	HS387604
184	WASHER, SPECIAL	166HS098
185	BRACKET, PELVIC BELT, BLACK	7310C067-1
186	SCREW, BUTTON HD CAP, 3/8-16 x 3/4"	HC700415-1
187	HEX JAM NUT, 3/8-24	HN714400
188	FLATWASHER, 3/8"	HS347703
189	DOWEL PIN, 3/8" DIA x 2" LG	HP346626
190	SHAFT RETAINER PLATE	7700C569
191	SCREW, 8-32 X 3/8" LOW SOC HD, CAP	HC543410
192	SPRING, COMPRESSION, .325" D X 1.5 LG	BS070772
193	DOWEL PIN, 1/4" DIA x 1-1/4" LG	HP306620
194	BUSHING, 1" ID x 1-3/8" OD x 3/4" LG	FB050202
195	PLUG, CAP, STEEL, 7/8" DIA.	BG030200
196	SCREW, HEX HEAD CAP, 3/8-24 x 6-1/2" LG	HC701259
197	HEX NUT, 1/4-20	HN624100
198	DOWEL PIN, 3/8" DIA X 2" LG	HP346626

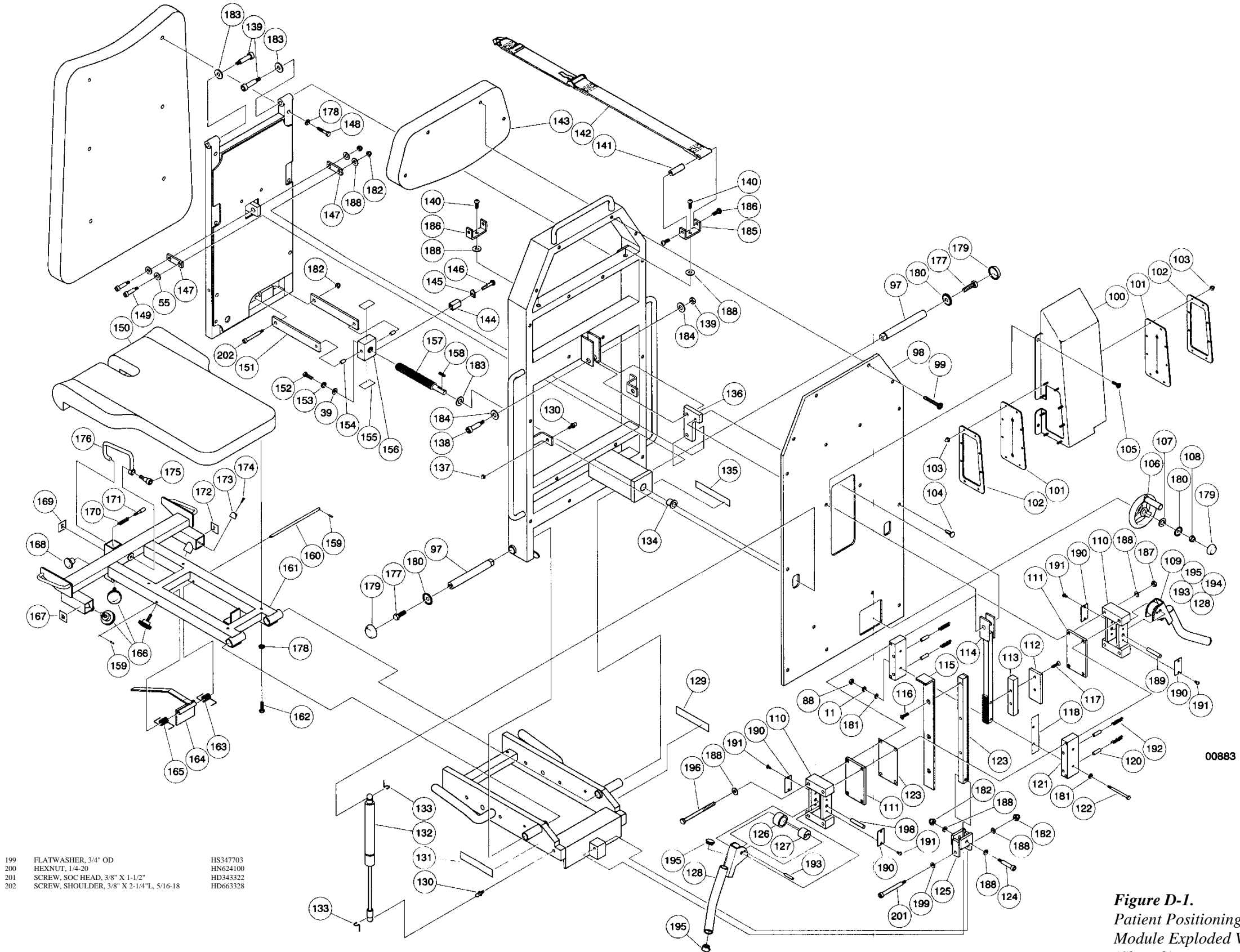
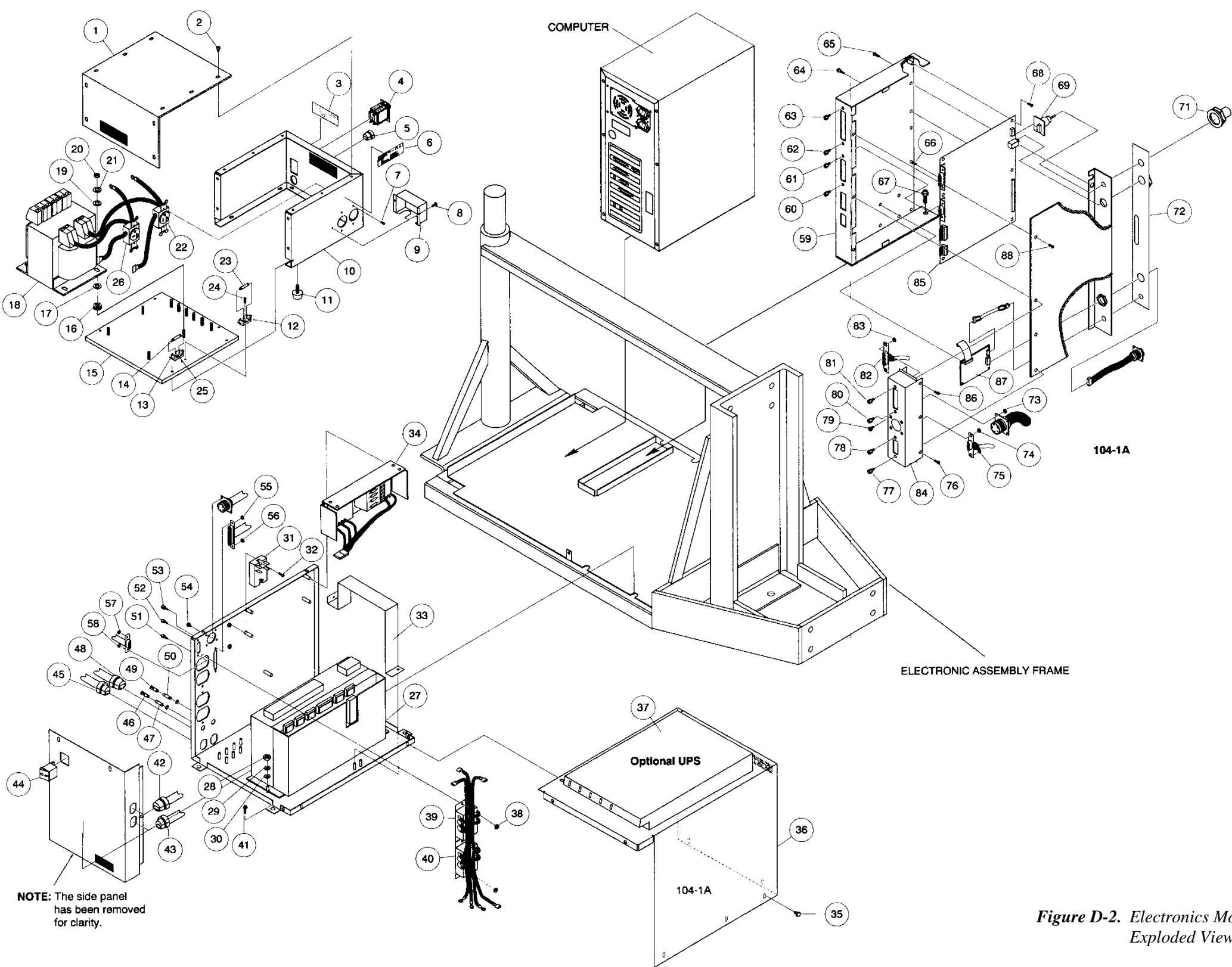


Figure D-1.  
Patient Positioning  
Module Exploded View  
(Sheet 2)



Item	Description	Part No.
1	COVER, ISOLATION TRANSFORMER-CE	7700C347
2	SCREW, PAN HEAD W/LOCKWASHER 6-32 X 1/4"	HM532508
3	LABEL, AC POWER/SERIAL NUMBER (INT.)	770CM388
4	CIRCUIT BREAKER	EF000022
5	STRAIN RELIEF, STRAIGHT	EL770008
6	LABEL, AC POWER, ISOLATION TRANSFORMER	770CM954
7	SCREW, PAN HEAD W/LOCKWASHER 6-32 X 1/4"	HM532508
8	SCREW, PAN HEAD W/LOCKWASHER 6-32 X 1/4"	HM532508
9	BRACKET, ISOLATION TRANSFORMER - CE	770C191
10	BASE, ISOLATION TRANSFORMER - CE	7700C348
11	BUMPER, 7/8" OD WITH 8-32 X 1/4" STUD	PR060771
12	FUSEHOLDER, .25 QUICK DISCONNECT	EF000770
13	FUSEHOLDER, .25 QUICK DISCONNECT	EF000770
14	FUSE 5A @ 250V, SLO-BLO, 3AG	EF290003
15	BASE, ISOLATION TRANSFORMER - CE	7700C348
16	GROMMET, SHOCK MOUNT	PP260008
17	FLATWASHER, 1/4"	HS307601
18	ISOLATION TRANSFORMER	ET000770
19	FLATWASHER, 1/4"	HS307601
20	HEX NUT, 1/4"-20	HN625200
21	WASHER, EXTERNAL TOOTH LOCK, 1/4"	HS308302
22	RECEPTACLE, AC SOCKET, 115 VAC, 20 AMPS	ES130007
23	FUSE 5A @ 250V SLO-BLO	EF000021
24	SCREW, PAN HEAD, 8/32" X 1/2"	HM542512
25	SCREW, PAN HEAD, 8/32 X 1/2"	HM542512
26	AC RECEPTACLE, 250 VAC, 20 AMPS	ES130770
27	DRIVE MODULE DM-30, CE (NON-CE)	730EM835 (7700S752)
28	DRIVE MODULE DM-75, CE (NON-CE)	770EM937 (7700S758)
29	HEX NUT, 10-32	HN584100
30	FLATWASHER, #10	HS107601
31	LOCKWASHER, EXTERNAL TOOTH, #10	HS308302
32	SOLID STATE RELAY	EE770000
33	SCREW, PAN HEAD PHILLIPS (SEMS) #6 X 1/2"	HM532512
34	BRACKET, MOTOR CABLE TERMINATION	7700M259
35	POWER SUPPLY	EP470770
36	SCREW, PAN HEAD PHILLIPS W/LOCKWASHER, #6 X 1/4"	HM532508
37	SERVO AMP COVER	7700W490
38	UNINTERRUPTIBLE POWER SUPPLY	EP500005
39	HEX NUT, 6-32 KEPS	HN534300
40	RECEPTACLE (DUPLEX)	ES130034
41	RECEPTACLE (DUPLEX)	ES130034
42	WHIZ-L, 1/4-20X5/8	HM621114
43	STRAIN RELIEF, .430" D, STRAIGHT THRU	EL270001
44	STRAIN RELIEF, STRAIGHT, .660" OD	EL130034
45	SWITCH, DPST	ES000770
46	STRAIN RELIEF, .430" D, STRAIGHT THRU	EL270001
47	FUSEHOLDER	EF000017
48	FUSE 20A @ 250V, SLO-BLO	EF000021
49	STRAIN RELIEF, .430" D, STRAIGHT THRU	EL270001
50	FUSEHOLDER	EF000017
51	FUSE 5A @ 250V, SLO-BLO	EF290003
52	SCREW, PAN HEAD, 6-32 X 3/8"	HM532410
53	JACKPOST KIT	EZ420002
54	JACKPOST KIT	EZ420002
55	SCREW, SOCKET HEAD CAP, 4-40 X 3/8"	HC522810
56	LOCKNUT, ELASTIC, 4-40	HN525200
57	LOCKNUT, ELASTIC, 4-40	HN525200
58	LOCKNUT, ELASTIC, 4-40	HN525200
59	LOCKNUT, ELASTIC, 4-40	HN525200
60	HOUSING, NDCB REAR-CE	7700M167
61	JACKPOST KIT	EZ4230002
62	JACKPOST KIT	EZ4230002
63	JACKPOST KIT	EZ4230002
64	JACKPOST KIT	EZ4230002
65	CIRCUIT BOARD SUPPORT	HP713770
66	SCREW, PAN HEAD PHILLIPS W/LOCKWASHER, #6 X 1/4"	HM532508
67	SELF CLINCHING STANDOFF	HP537109
68	WHIZ-L, 1/4-20X5/8"	HM621114
69	SCREW, PAN HEAD PHILLIPS W/LOCKWASHER, #6 X 1/4"	HM532508
70	MANUAL MODE PCB ASSEMBLY	7700S635
71	HOUSING, NDCB FRONT-CE	7700S163
72	INSTRUMENT KNOB	PP470007
73	LABEL, SPEED CONTROL	770CM629
74	SELF CLINCHING NUT, 6-32	HN534901
75	SELF CLINCHING NUT, 6-32	HN534901
76	SELF CLINCHING NUT, 6-32	HN534901
77	SCREW, PAN HEAD PHILLIPS W/LOCKWASHER, #6X1/4"	HM532508
78	JACKPOST KIT	EZ4230002
79	JACKPOST KIT	EZ4230002
80	SCREW, SOCKET HEAD CAP, 4-40 X 3/8"	HC522810
81	JACKPOST KIT	EZ4230002
82	JACKPOST KIT	EZ4230002
83	SELF CLINCHING NUT, 6-32	HN534901
84	NDCB, REAR EXTENDER	7700M169
85	NDCB, PCB ASSEMBLY	7700S628
86	SCREW WITH WASHER, 6-32 X 1/4"	HM532508
87	AUXILIARY INTERFACE PCB ASSEMBLY	7700S690



NOTE: The side panel  
has been removed  
for clarity.

Figure D-2. Electronics Module  
Exploded View (Sheet 1)



Item	Description	Part No.
88	LIGHT PEN	EN770001
89	KEYBOARD	EK390010
90	LABEL, ROM RING	770CM108
91	INPUT ADAPTER ASSEMBLY	7700A828
92	SCREW, SOCKET HEAD CAP, 1/4-20 X 3/8"	HC622834-1
93	MACHINED ROM RING	7700P105
94	ROM STOP SUBASSEMBLY	7700S101
95	ROM STOP SUBASSEMBLY	7700S101
96	EMI CAN	7700W338
97	EMI SHIELD	7700M141
98	TORQUE BOARD	7700S123
99	SCREW, SOCKET HEAD CAP, 6-32 X 3/8"	HCS32810
100	LOCKWASHER, #6 SPLIT	HS068301
101	STATORPCB ASSEMBLY	7700S262
102	DYNAMOMETER INTERFACE PLATE	7700C253
103	STANDOFF, HEX MALE/FEMALE 6-32 X 3/8" STEEL	HP537110
104	SCREW, FLAT HEAD, SOCKET, 1/4-20 X 3/4"	HC620915
105	WOODRUFF KEY	REFERENCE
106	DYNAMOMETER MODULE SUBASSEMBLY	7700S135
107	BEARING SPHERIAL, 1" BORE	FB030012
108	DYNA HOUSING	7700C252
109	BEARING, THRUST	FB050053
110	TILT LOCK LEAD SCREW	7700W131
111	BEARING, THRUST	FB050053
112	LABEL, ARROW INDICATOR	770CM138
113	LABEL, PROTRACTOR SCALE	770CM139
114	TILT LOCK ACME NUT	7300M244
115	SCREW, FLAT HEAD, SOCKET, 8-32 X 1/2"	HM540912
116	TILT LOCK FLOATING FACE GEAR	7300P245
117	TILT LOCK REMOVABLE FACE GEAR	7300P246
118	SCREW, SOCKET HEAD CAP, 4-40 X 3/8"	HCS32810
119	SCREW, SOCKET HEAD CAP, 4-40 X 3/8"	HCS32810
120	SCREW, SOCKET HEAD CAP, 4-40 X 3/8"	HCS32810
121	END PLATE	7700C256
122	SCREW, BUTTON HEAD SOCKET, 1/4-20 X 1/2"	HC620412
123	SCREW, SHOULDER, 3/16" DIA X 1/8" LG, 8-32"	HD543306
124	UNIVERSAL MOUNTING STRAP	PC149640
125	PIVOT, SPHERICAL BEARING	7700C134
126	HOUSING, BUSHING	7700C133
127	SCREW, FLAT HEAD SOCKET, 5/16-18 X 1-1/2"	HC660922-1
128	BALL KNOB, 1" DIA	PP460024
129	ROLL PIN, 3/16" DIA X 3/4" LG	HP286715
130	HANDLE HUB	7300P254
131	HANDLE	7300P255
132	BALL KNOB, 1" DIA	PP460024
133	BENT YOKE	7700C130
134	THRUST WASHER, .5" ID X .937" OD X .092"	HS387604
135	DYNAMOMETER PEDESTAL	7700W150
136	UNIVERSAL MOUNTING STRAP, 1-1/2"	PC149640
137	SCREW, SHOULDER, 3/16" DIA X 1/8" LG, 8-32"	HD543306
138	HEX JAM NUT, 3/8-24	HN714400
139	FLATWASHER, 3/8"	HS347703
140	RIGHT LEVER SUBASSEMBLY	REFERENCE
141	COATED CLAMP BLOCK	7700C213
142	SCREW, LOW SOCKET HEAD CAP, 8-32 X 3/8"	HCS43410
143	BEARING PLATE	7700M214
144	DOWEL PIN, 3/8" DIA X 2" LG	HP346626
145	SHAFT RETAINER PLATE	7700C569
146	GAS SPRING	EZ000770
147	SCREW, SOCKET SET, 1/2"-13 X 3/8" LG	HM781610
148	SPRING, COMPRESSION, .325" D X 1.5" LG	BS070772
149	HARD COAT ANODIZED PEDESTAL CLAMP	7700P200
150	FLATWASHER, 3/8"	HS347703
151	COATED CLAMP BLOCK	7700C213
152	BEARING PLATE	7700M214
153	SHAFT RETAINER PLATE	7700C569
154	SCREW, LOW SOCKET HEAD CAP, 8/32" X 3/8"	HCS43410
155	DOWEL PIN, 3/8" DIA X 2" LG	HP346626
156	CLAMP ROLLER	7700M215
157	DOWEL PIN, 1/4" DIA X 1-1/4" LG	HP306620
158	COATED LEFT CLAMP LEVER WELDMENT	7700C210
159	PLUG, CAP, STEEL, 7/8" DIA	BG030200
160	PLUG, CAP, STEEL, 7/8" DIA	BG030200
161	BUSHING, 1" ID X 1-3/8" OD X 3/4" LG	FB050202
162	SCREW, HEX HEAD CAP, 3/8-24 X 6-1/2" LG	HC701259
163	SLEEVE, TORSION SPRING	7700M254
164	TORSION SPRING	BS000770-2
165	TINNERMAN FASTENER, #8, J-TYPE	HF080007
166	COVER PLATE	7700C602
167	TINNERMAN FASTENER, #8, J-TYPE	HF080007
168	FLATWASHER, 1/2" OD X 7/32" ID X 3/64" THK	HS107601
169	LOCKWASHER, 10 SPLIT	HS108302
170	SCREW, SOCKET HEAD CAP, #10-24 X 1/2"	HCS782812
171	COVER, PEDESTAL CLAMP	770DE697
172	LABEL, DYNA PED. ROTATION LT	770CM154-1
173	SCREW, PAN-L, 8-32X3/4"	HM541815-1
174	ENCLOSURE, LEFT SIDE	770DE699
175	SCREW, PAN-L, 8-32X3/4"	HM541815-1
176	MONITOR ARM	7700C660
177	MONITOR TABLE WELDMENT	7700C670
178	VELCRO PADS	7700M609
179	MONITOR	EN380016
180	ENCLOSURE, RIGHT SIDE	770DE698
181	LABEL, DYNA PED ROTATION RT	770CM154-2

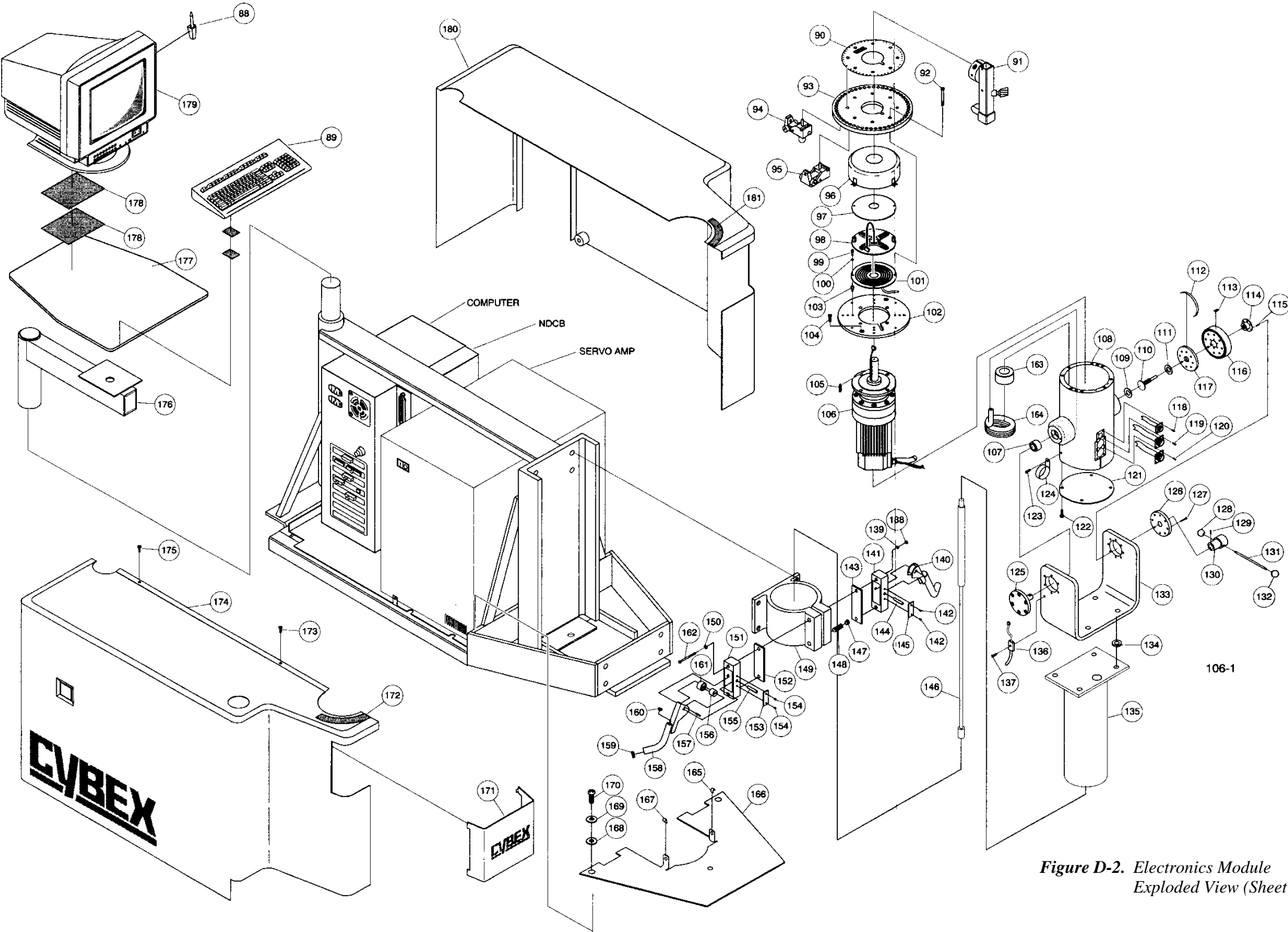


Figure D-2. Electronics Module  
Exploded View (Sheet 2)