

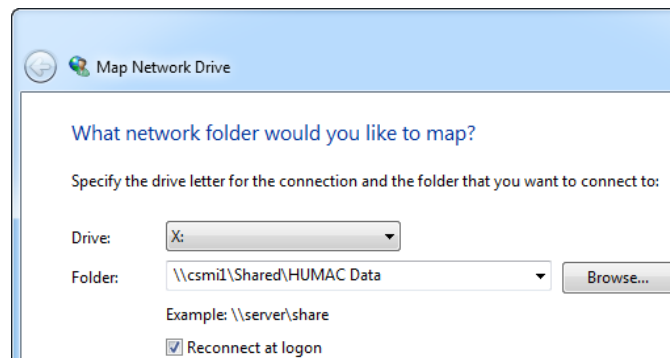
Networking the HUMAC Program

1. Introduction

- 1.1. The HUMAC program (Version 3.3.6 and above) is fully network compatible, allowing multiple users to simultaneously access the HUMAC database.

2. Creating a Mapped Drive

- 2.1. From the Windows **Start** command, select **Computer**.
- 2.2. Click the **Map network drive** link.
- 2.3. Create a mapped drive to the folder which will contain the networked HUMAC data. Make sure **Reconnect at login** is selected. For example:



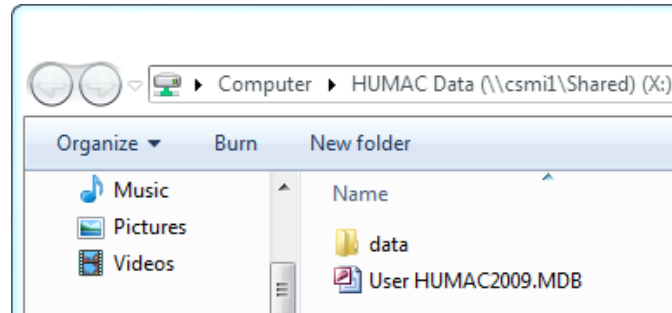
3. HUMAC2004

- 3.1. Exit the **HUMAC** program.
- 3.2. Using the Windows Explorer, copy the **User HUMAC.MDB** file from **C:\Program Files\Computer Sports Medicine, Inc.\HUMAC** to your **Network Folder**.
- 3.3. Using the Windows Explorer, copy the **Data** folder from **C:\Program Files\Computer Sports Medicine, Inc.\HUMAC** to your **Network Folder (X:)**.
- 3.4. Start the **HUMAC** program.
- 3.5. From the **File** menu, select **Preferences**.
- 3.6. From the **Data File Locations** area, click the **Open** button.
- 3.7. From the **Open** dialog box, select the **User HUMAC.MDB** file in your **Network Folder**.
- 3.8. Exit and re-start the HUMAC program.

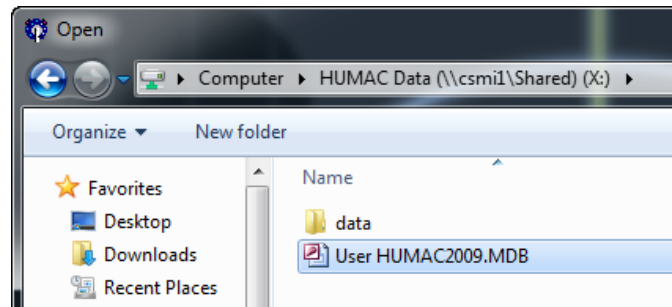
4. HUMAC2009

- 4.1. Exit out of the **HUMAC** program.
- 4.2. Depending on your Windows version, the data files to move will be located in one of the following two locations.
 - 4.2.1. Windows7, Vista: **C:\Users\Public\Documents\CSMi\HUMAC2009**.
 - 4.2.2. Windows XP: **C:\Documents and Settings\All Users\Documents\CSMi\HUMAC2009**.

- 4.3. Using the Windows Explorer, copy the **User HUMAC2009.MDB** file from the data file location to your **Network Folder (X:)**.
- 4.4. Using the Windows Explorer, copy the **Data** folder from the data file location to your **Network Folder (X:)**.



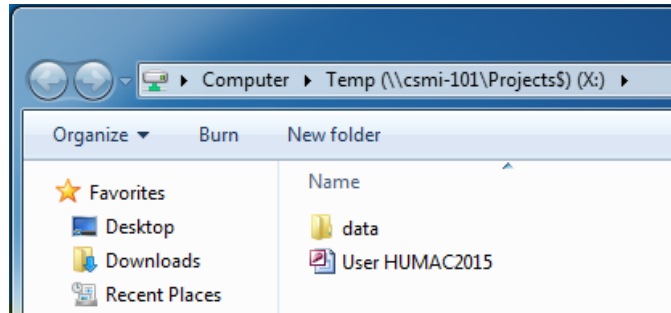
- 4.5. Start the **HUMAC** program.
- 4.6. From the **File** menu, select **Database, Open**.
- 4.7. From the **Open** dialog box, select the **User HUMAC2009.MDB** file in your **Network Folder**.



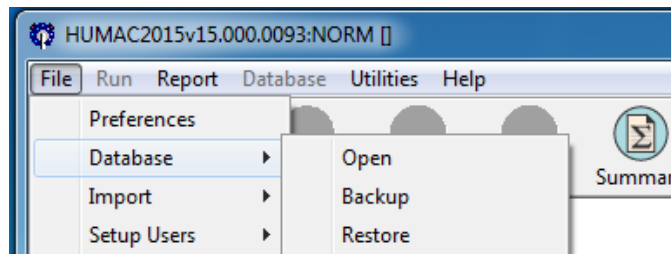
- 4.8. Exit and re-start the HUMAC program.

5. HUMAC2015

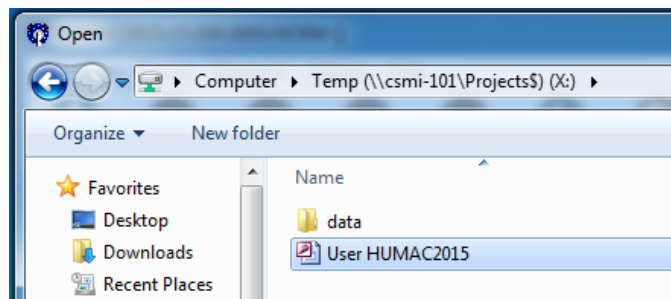
- 5.1. Exit the **HUMAC** program.
- 5.2. Depending on your Windows version, the data files to move will be located in one of the following two locations.
 - 5.2.1. Windows 10, 8, 7, Vista: **C:\Users\Public\Documents\CSMi\HUMAC2015**.
 - 5.2.2. Windows XP: **C:\Documents and Settings\All Users\Documents\CSMi\HUMAC2015**.
- 5.3. Using the Windows Explorer, copy the **User HUMAC2015.MDB** file from the data file location to your **Network Folder (X:)**.
- 5.4. Using the Windows Explorer, copy the **Data** folder from the data file location to your **Network Folder (X:)**.



- 5.5. Start the **HUMAC** program.
- 5.6. From the **FILE** menu, select **DATABASE, OPEN**.



- 5.7. From the **OPEN** dialog box, select the **User HUMAC2015.MDB** file in your **Network Folder**.



- 5.8. Exit and re-start the HUMAC program.
- 5.9. From the **HELP, ABOUT** command, you can view the database location. In this case the mapped X: drive.

